

Gilson BROTHERS COMPANY

BOX 152, PLYMOUTH, WISCONSIN 53073, U.S.A., PHONE (414) 893-1011

January 21, 1982

Service Bulletin #166

To: All Authorized Dealers And Microfiche Holders

Subject: Worn Or Chewed Up Friction Wheel Rollers

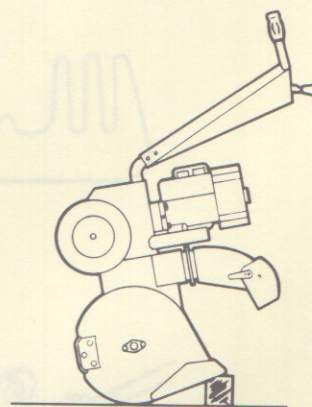
Units Involved: Snowthrower, 3 Speed With Reverse (Unitrol Shift Handle)

We have received reports from the field stating that the subject problem has occurred or has been a repeat problem.

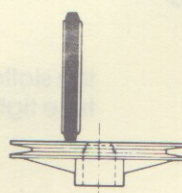
Investigation has resulted in findings that indicate incorrect assembly of the shift rods. The friction wheel roller is incorrectly positioned over the drive pulley hole or rides the edge of the hole chewing up the rubber.

Make the following check to be sure the friction wheel roller is in the proper position when the traction speed control is in the reverse, neutral and 1'st forward speed positions.

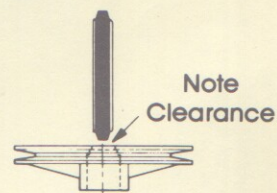
1. Tip snow thrower forward and rest on the drift cutter (if so equipped) or rest top portion of collector housing on block of wood, as shown in example A at right.
2. Take off the bottom inspection cover by removing five (5) hex hd. cap screws and lock washers.
3. Check position of the friction wheel roller.
 - A. **With traction speed control in reverse:** the roller should be in contact with the traction drive pulley and be to the left of pulley center hole as shown in example B at right.
 - B. **With traction speed control in neutral:** the roller should not be in contact with the traction drive pulley as shown in example C at right.
 - C. **With traction speed control in 1'st forward speed position:** the roller should be in contact with the traction drive pulley and be to the right of pulley center hole as shown in example D at right.
4. If the friction wheel roller is not in the positions as described above, repeat steps 7 through 11 of the shifter control set-up instructions in the Owner's Guide (as follows on reverse side).



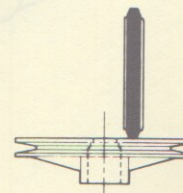
EXAMPLE A



EXAMPLE B
REVERSE



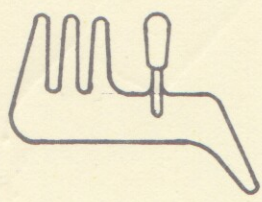
EXAMPLE C
NEUTRAL



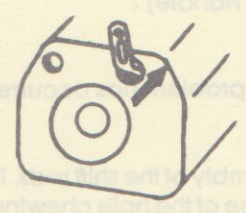
EXAMPLE D
1'ST SPEED FORWARD

O U T D O O R P O W E R E Q U I P M E N T

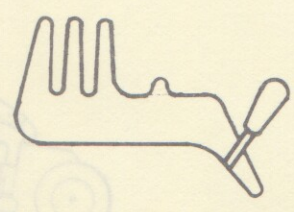
PLANTS AT: LEXINGTON, TENN., OOSTBURG, FREDONIA AND PLYMOUTH, WIS.



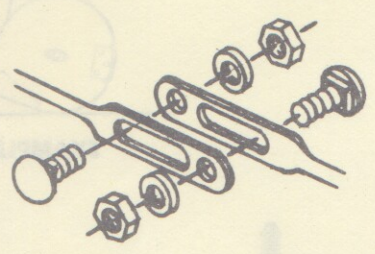
Place traction speed control in the neutral position.



Push shifter rod end into the unit as far as it will go.

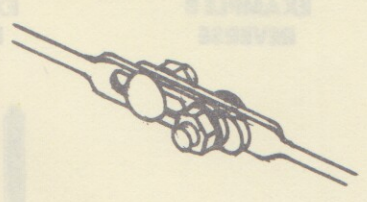


Place traction speed control in the reverse position.



Connect the shifter rod to the shifter rod end with two (2) 1/4-20 x 3/4 carriage bolts, 1/4 lock washers and 1/4-20 hex nuts, from hardware bag, making certain the head of the bolts are on

the slotted sides of the rods. At this time tighten nuts only finger tight.



Pry the two rods apart in opposite directions as far as they will go, with a screwdriver. Be certain the edges of the two rods are parallel and tighten securely.